

BIR & ACCUCHART II™



PROTECT YOUR INVESTMENT WITH VEEDER-ROOT'S BUSINESS INVENTORY RECONCILIATION (BIR) & ACCUCHART II FOR THE TLS-450

Underground fuel is probably the most expensive inventory at any convenience store or gas station. Knowing when your fuel is missing or lost – whether to theft, short drops or other issues – is crucial to operating a safe, profitable business. Veeder-Root's industry-leading BIR & AccuChart II business tools can help protect your stores' important fuel investment.

Business Inventory Reconciliation

Did you know?

If a fuel delivery was made while a customer was pumping gasoline, store operators have no way of knowing exactly how much fuel was dropped into the underground tank.

Get What You Pay For

Veeder-Root's BIR tracks all fuel that enters or exits each of your underground tanks, regardless of delivery or dispensing activity. BIR automatically collects metered sales information from electronic and mechanical dispensers and gives you accurate delivery and reconciliation reports on a shift-by-shift basis.

Stay Compliant

Veeder-Root's BIR for the TLS-450 automatically calculates periodic variance thresholds based on U.S. EPA requirements and includes them on reconciliation reports. If necessary, the variance threshold can be programmed to comply with state or local regulations.

TLS-450 BIR Benefits

- **NEW** Can track up to 8 shifts per 24-hour period
- **NEW** Fits all site configurations and supports both line manifolded tanks and multiple manifolded sets
- Reports on fuel variance on a by-tank basis
- Saves money by ensuring that you know what goes into and out of your tanks
- Simplified compliance reports

AccuChart II

Did you know?

An inaccurate tank chart is the most common reason for inventory measurement inaccuracy.

Remove Measurement Error

The best reconciliation starts with the best tank chart. AccuChart II, Veeder-Root's patented tank chart calibration algorithm, features powerful diagnostic tools that give clear, actionable instructions to help with proper inventory management. AccuChart II's tank chart minimizes installation-related errors, such as tank tilt, deflection and end shape. This proprietary software takes the headache, guesswork, time and cost out of the calibration process.

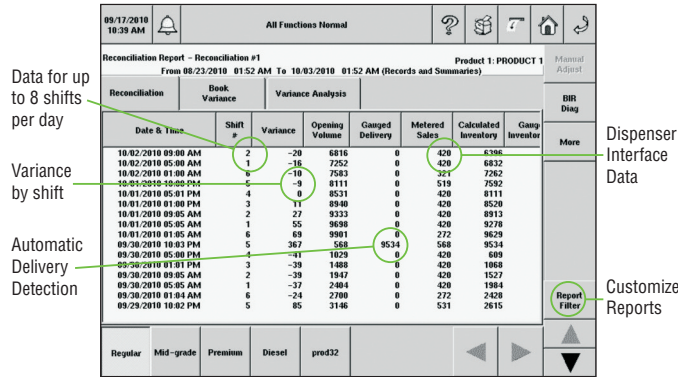
Access Information Quickly

When used together, a reliable tank chart and business inventory reconciliation allow operators to identify fuel variances due to operational issues. BIR & AccuChart II provide flexibility, allowing you to manage your inventory and chart your tanks without adding undue costs to your operation.

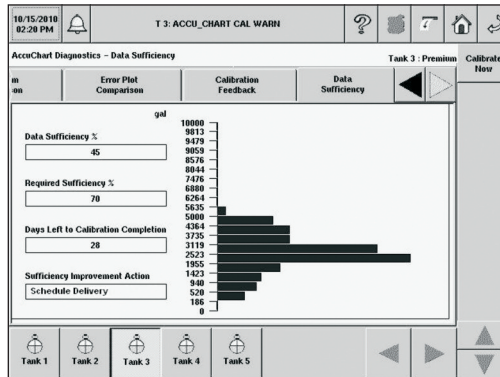
TLS-450 AccuChart II Benefits

- **NEW** Limited range calibration allows operators to select calibration ranges for only the portions of the tank they plan to use
- **NEW** Provides up-to-the-minute information on progress toward a calibrated tank and indicates next steps for fastest calibration with minimum business interruption
- Provides multiple pass tank calibration for improved tank chart accuracy
- Is easy to install and set up

TLS-450 BIR & AccuChart II Screens



Reconciliation reports show variance by shift



AccuChart II—Data sufficiency diagnostics provides calibration status and actionable instructions to fill data gaps

Specifications

TLS-450 System requirements for BIR & AccuChart II

- TLS-450 with BIR and DIM features
- Software Version 3.A or higher
- Mag 1 (0.1 gph) magnetostrictive (standard or Mag Plus) probe in each tank. The Mag 1 probe for alternative fuels is also supported.
- Dispenser Interface Module (DIM): The DIM allows the TLS-450 to interface to most Gilbarco, Wayne, and third party POS systems that implement the VR BIR protocol (ALLIED, ANDI). For electronic dispensers, one DIM is required for each TLS-450. Up to three DIMs can be installed to support sites with multiple POS systems.
- DIM installation kit (see POS Application Guide for DIM Installation Kit details: 577013-401). One installation kit may be required for each DIM.

To learn more, contact us at 888.561.7942, or visit www.veeder.com.

Configuration

The following information includes part description, part number and configuration information for your convenience.

To add BIR & AccuChart II to a new TLS-450 console order:

Part Description	Part #
AccuChart II / BIR EDIM factory installed	333149-001
AccuChart II / BIR CDIM 3 inputs factory installed	331150-001
AccuChart II / BIR LVDIM 12 inputs factory installed	331151-001
AccuChart II / BIR MDIM 12 inputs factory installed	331152-001

To add BIR & AccuChart II to an existing TLS-450 console:

Part Description	Part #
AccuChart II / BIR EDIM - upgrade kit	330020-676
AccuChart II / BIR CDIM 3 inputs - upgrade kit	330020-677
AccuChart II / BIR LVDIM 12 inputs - upgrade kit	330020-678
AccuChart II / BIR MDIM 12 inputs - upgrade kit	330020-679

In addition to the BIR & AccuChart II feature upgrades listed above, order the appropriate installation kit for your application. The TLS-450 uses the same installation kits as the TLS-350.

For console upgrades where an existing TLS-350R is being replaced by a TLS-450 with BIR & AccuChart II, a 25 to 9 pin adapter may be purchased to convert the existing DIM installation kit for use with the TLS-450.

Part Description	Part #
EDIM Cable Adapter 25-9	330020-682

