

Mag Plus Probe

Assembly Guide

Notice

Veeder-Root makes no warranty of any kind with regard to this publication, including, but not limited to, the implied warranties of merchantability and fitness for a particular purpose.

Veeder-Root shall not be liable for errors contained herein or for incidental or consequential damages in connection with the furnishing, performance, or use of this publication.

Veeder-Root reserves the right to change system options or features, or the information contained in this publication.

This publication contains proprietary information which is protected by copyright. All rights reserved. No part of this publication may be photocopied, reproduced, or translated to another language without the prior written consent of Veeder-Root.

Contact TLS Systems Technical Support for additional troubleshooting information at 800-323-1799.

DAMAGE CLAIMS / LOST EQUIPMENT

Thoroughly examine all components and units as soon as they are received. If any cartons are damaged or missing, write a complete and detailed description of the damage or shortage on the face of the freight bill. The carrier's agent must verify the inspection and sign the description. Refuse only the damaged product, not the entire shipment.

Veeder-Root must be notified of any damages and/or shortages within 30 days of receipt of the shipment, as stated in our Terms and Conditions.

VEEDER-ROOT'S PREFERRED CARRIER

1. Contact Veeder-Root Customer Service at 800-873-3313 with the specific part numbers and quantities that were missing or received damaged.
2. Fax signed Bill of Lading (BOL) to Veeder-Root Customer Service at 800-234-5350.
3. Veeder-Root will file the claim with the carrier and replace the damaged/missing product at no charge to the customer. Customer Service will work with production facility to have the replacement product shipped as soon as possible.

CUSTOMER'S PREFERRED CARRIER

1. It is the customer's responsibility to file a claim with their carrier.
2. Customer may submit a replacement purchase order. Customer is responsible for all charges and freight associated with replacement order. Customer Service will work with production facility to have the replacement product shipped as soon as possible.
3. If "lost" equipment is delivered at a later date and is not needed, Veeder-Root will allow a Return to Stock without a restocking fee.
4. Veeder-Root will NOT be responsible for any compensation when a customer chooses their own carrier.

RETURN SHIPPING

For the parts return procedure, please follow the appropriate instructions in the "General Returned Goods Policy" pages in the "Policies and Literature" section of the Veeder-Root **North American Environmental Products** price list. Veeder-Root will not accept any return product without a Return Goods Authorization (RGA) number clearly printed on the outside of the package.

Introduction

Important 1
 Contractor Certification Requirements 1
 Related Manuals 1

Mag Plus Probe Installation Kits

Installation Kits 2

Assembling Probe Components

Attaching Probe Canister Insulator Sleeves (2-Inch Risers) 4
 Attaching Probe Canister Spacer Rings (3- & 4-Inch Risers) 4
 Assembling Floats onto Probe Shaft 6
 Attaching Cable Connector to Probe Canister 6

Figures

Figure 1. Probe Installation Kit 846100-1XX, 846400-1XX and
 846402-1XX Contents 2
 Figure 2. Probe Installation Kit 846400-3XX, -0XX and
 846402-3XX, -0XX Contents 3
 Figure 3. Installing Probe Canister Insulator Sleeves 4
 Figure 4. Installing Probe Canister Spacer Rings 5
 Figure 5. Probe float installation 6

Tables

Table 1. Probe Installation Kit P/N 846100-1XX, 846400-1XX and 846402-1XX 2
 Table 2. Probe Installation Kit P/N 846400-3XX, -0XX and 846402-3XX, -0XX and
 330020-720, -721, -722 3

Introduction

This manual describes how to identify and assemble the components of the Mag Plus Probes. Instructions are included for assembling floats onto the probe's shaft, attaching spacer rings to the probe's canister, and attaching the probe's cable to the canister.

For guidelines on site preparation, instructions on installing the probe into a tank, and instructions on connecting wiring from the probe to the console, you must refer to the appropriate Veeder-Root Site Preparation and Installation manual.

Important

Some of the installation kit components, such as epoxy packs, will be needed when installing the probe into the tank. Do not discard any unused parts.

Make a record of the float size installed on each probe. The installed float size will be required for each probe during system setup.

Contractor Certification Requirements

Veeder-Root requires the following minimum training certifications for contractors who will install and setup the equipment discussed in this manual:

Installer (Level 1) Certification: Contractors holding valid Installer Certification are approved to perform wiring and conduit routing; equipment mounting; probe, sensor and carbon canister vapor polisher installation; wireless equipment installation; tank and line preparation; and line leak detector installation.

ATG Technician (Level 2/3 or 4) Certification: Contractors holding valid ATG Technician Certifications are approved to perform installation checkout, startup, programming and operations training, system tests, troubleshooting and servicing for all Veeder-Root Series Tank Monitoring Systems, including Line Leak Detection. In addition, Contractors with the following sub-certification designations are approved to perform installation checkout, startup, programming, system tests, troubleshooting, service techniques and operations training on the designated system.

- Wireless 2
- Tall Tank

VR Vapor Products Certification: Contractors holding a certification with the following designations are approved to perform installation checkout, startup, programming, system tests, troubleshooting, service techniques and operations training on the designated system.

- ISD – In Station Diagnostics
- PMC – Pressure Management Control
- CCVP - Veeder-Root Vapor Polisher
- Wireless – ISD/PMC Wireless
- A current Veeder-Root Technician Certification is a prerequisite for the VR Vapor Products course.

Warranty Registrations may only be submitted by selected Distributors.

Related Manuals

To install probe in tank, consult the appropriate Site Prep and Installation Manual for your console.

Mag Plus Probe Installation Kits

Installation Kits

Available probe installation kits are listed in Table 1 and Table 2..

Table 1. Probe Installation Kit P/N 846100-1XX, 846400-1XX and 846402-1XX

Qty.	Description	Part Number
1	Cable, 5 feet long (standard size)	330272-001
1	2-inch Product Float	331627-001
1	2-inch Water Float	331582-00X
1	Boot	333202-001
2	Canister Insulating Sleeves	332457-001
1	Cable Seal Kit (CSK)	330020-415 or 330020-067

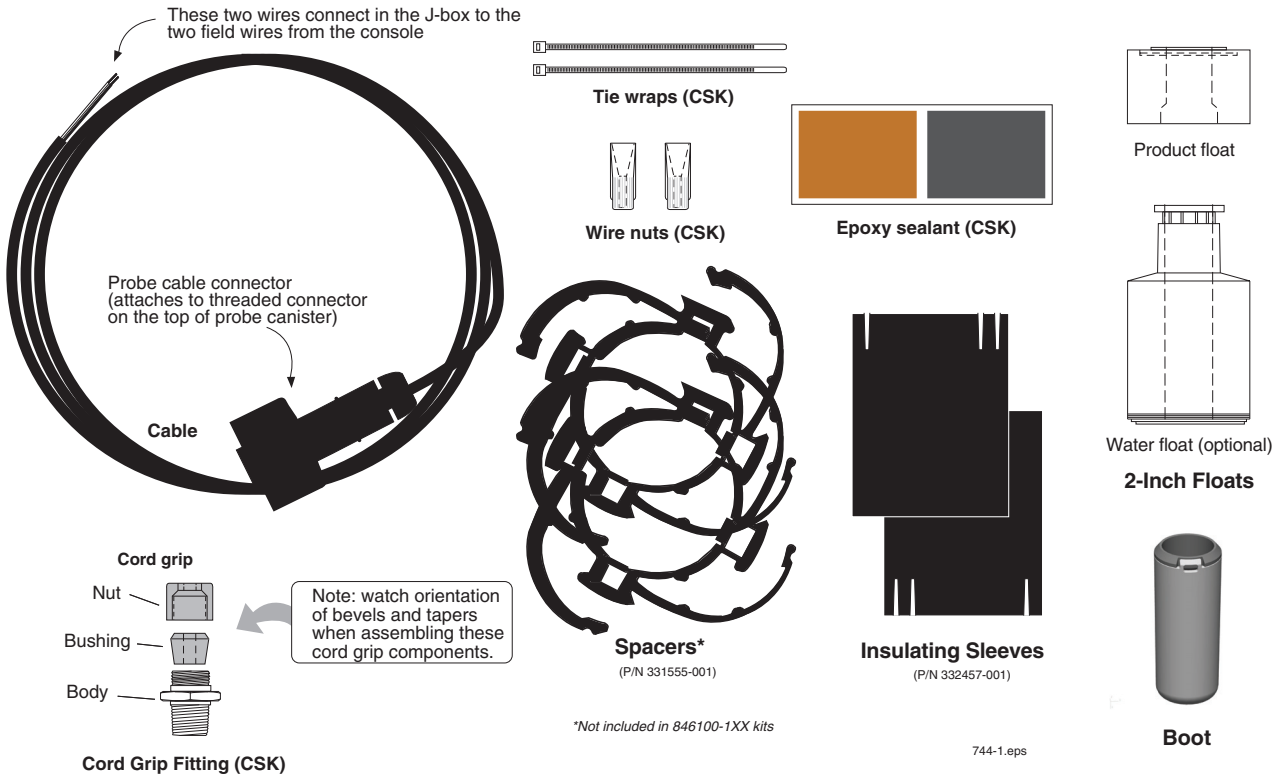


Figure 1. Probe Installation Kit 846100-1XX, 846400-1XX and 846402-1XX Contents

Table 2. Probe Installation Kit P/N 846400-3XX, -0XX and 846402-3XX, -0XX, 330020-720, -721, -722

Qty.	Description	Part Number
1	Cable, 5 feet long (standard size)	330272-001
1	3-inch* Product Float	331759-001
1	3-inch* Water Float	331583-00X
1	4-inch* Product Float	331719-001
1	4-inch* Water Float	331718-00X
1	Boot	333202-001
2	Canister Spacer Ring	331555-001
1	Cable Seal Kit (CSK)	330020-067

*Note: Depending on your order, this kit is shipped with either 3- or 4-inch floats.

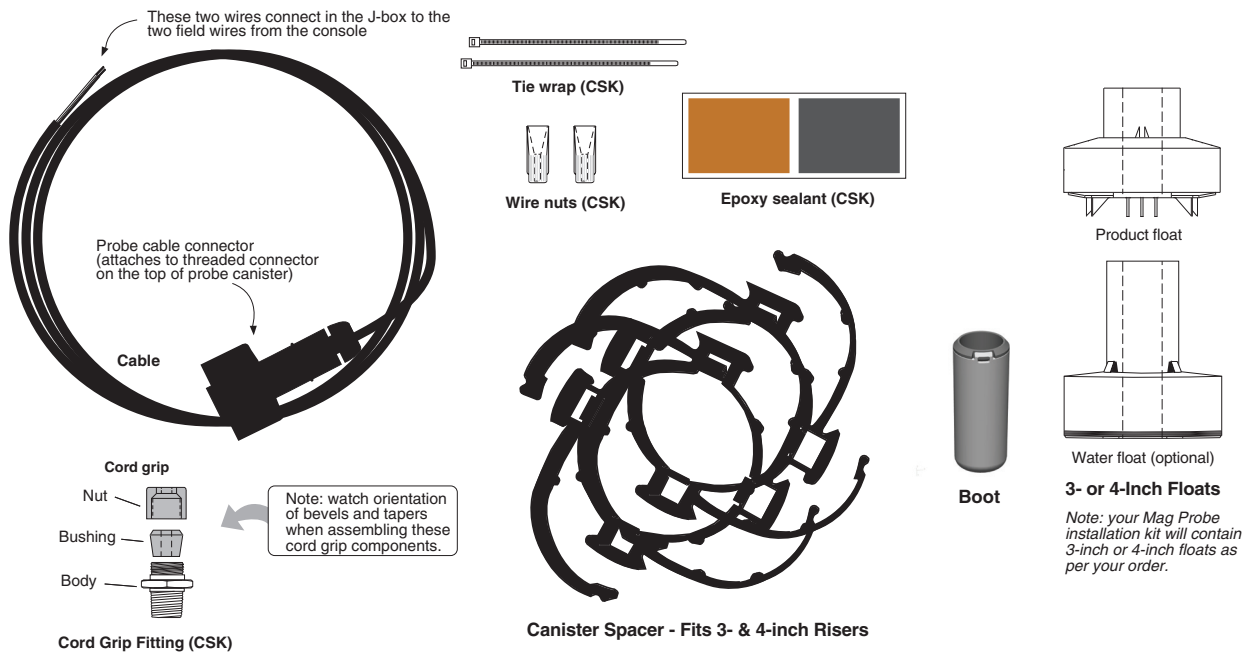


Figure 2. Probe Installation Kit 846400-3XX, -0XX and 846402-3XX, -0XX Contents

Assembling Probe Components

Attaching Probe Canister Insulator Sleeves (2-Inch Risers)

1. Open the Probe shipping carton so that you have access to the probe. Also open the installation kit.
2. Install the two canister sleeves onto the probe canister as shown in Figure 3.

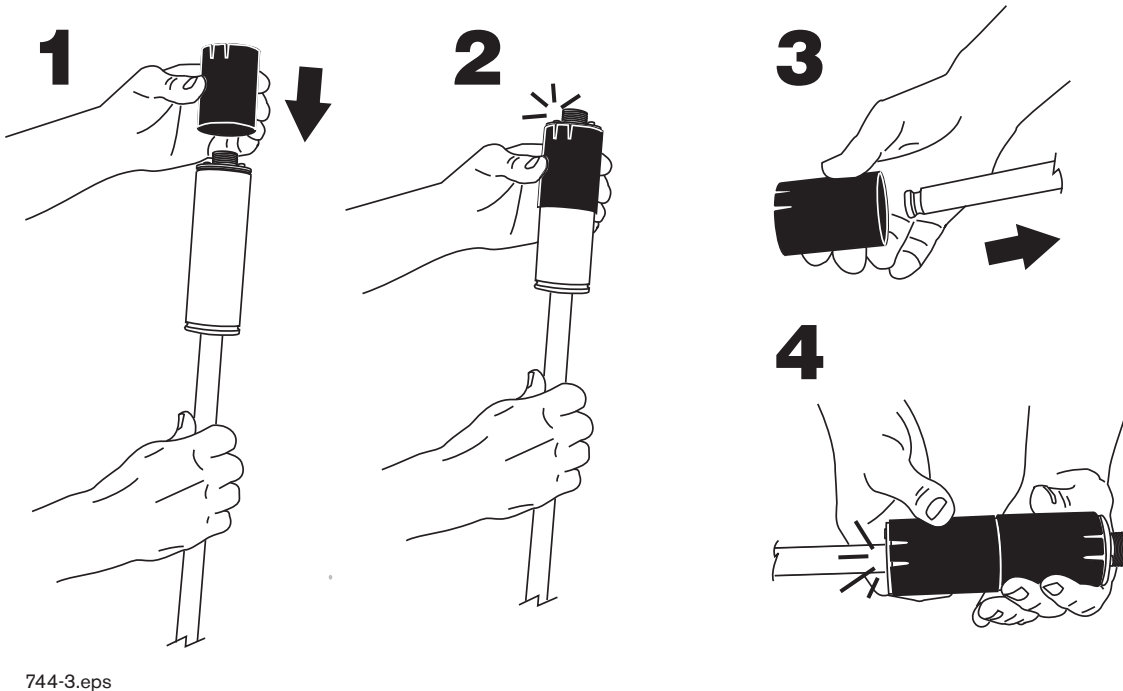


Figure 3. Installing Probe Canister Insulator Sleeves

Attaching Probe Canister Spacer Rings (3- & 4-Inch Risers)

1. Open the Probe shipping carton so that you have access to the probe. Open the installation kit.
2. Set the spacer vanes for a 3- or 4-inch riser (see Figure 4) as required. Install the two spacer rings onto the probe canister as shown in the figure below. Note: you must slide the bottom spacer over the probe and onto the lower end of the canister.

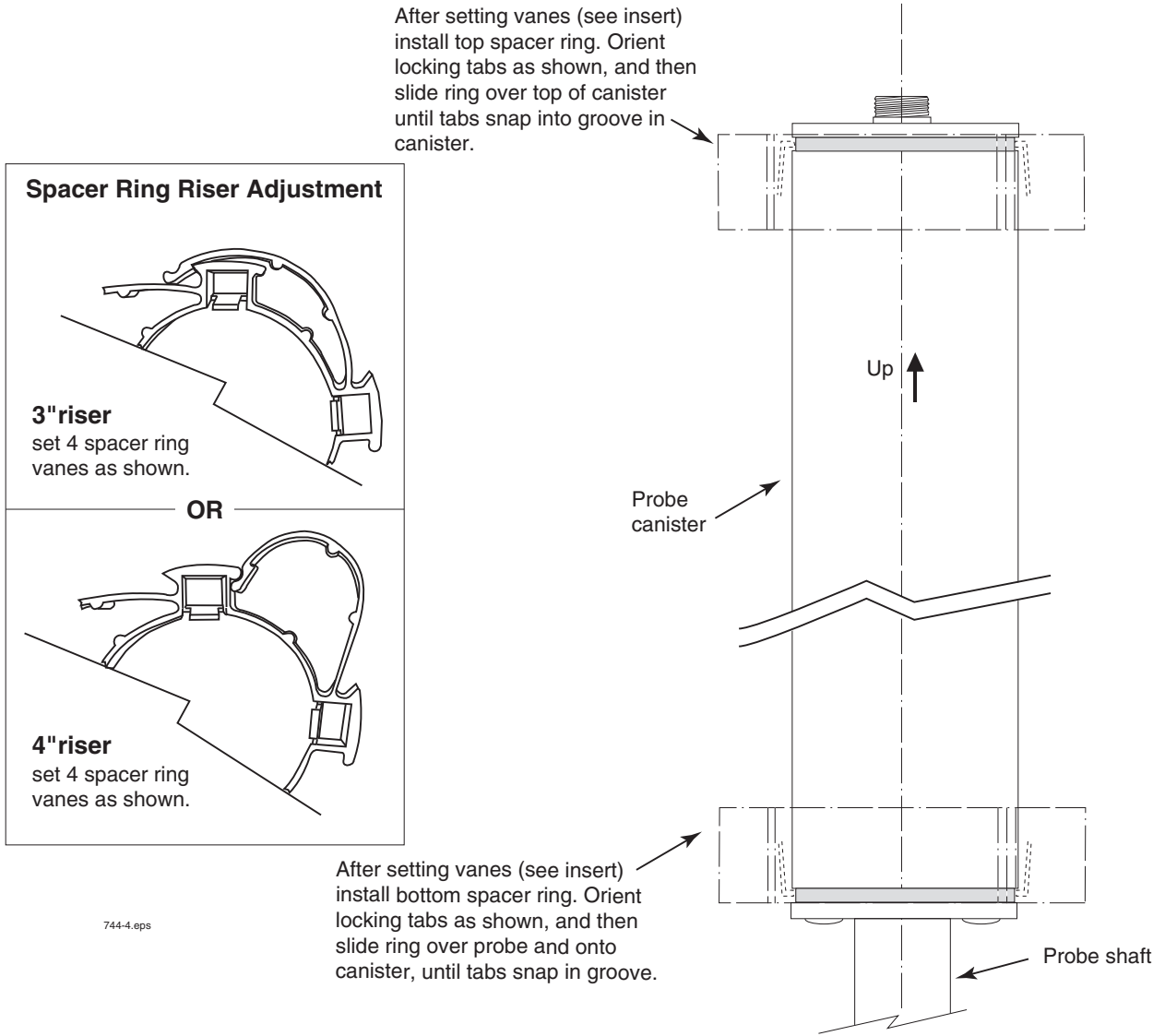


Figure 4. Installing Probe Canister Spacer Rings

Assembling Floats onto Probe Shaft

The Product floats, Water Floats (if ordered), and Boots from Probe Installation Kits are assembled on the probe shafts in the exact sequence and orientation shown in Figure 5.

IMPORTANT! Failure to push the boot as far as possible onto the probe shaft could cause the boot and float(s) to fall into the tank. The boot must be pushed on until it “locks” on the probe shaft. Also, water floats must be installed, if ordered, for the probe to operate correctly.

Handle the probe carefully. Striking or dropping the probe will result in loss of calibration and could cause permanent damage.

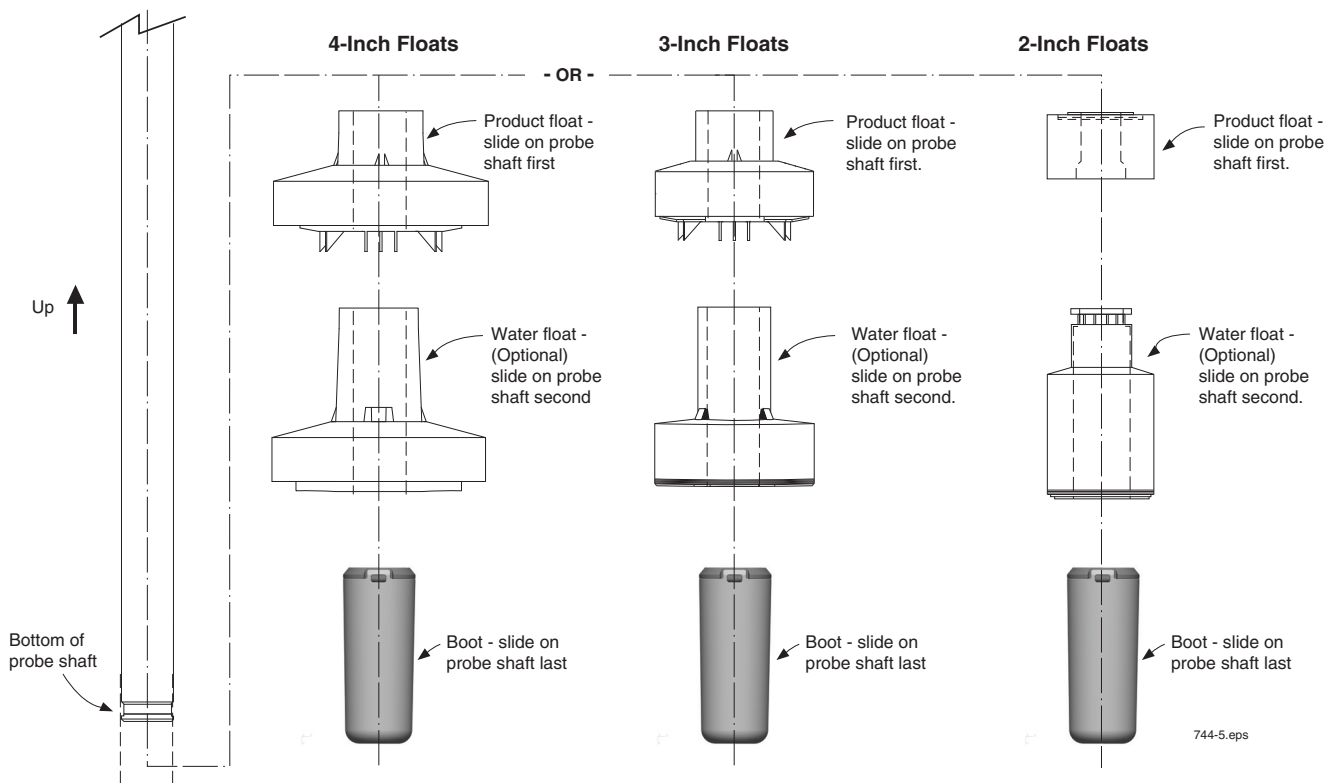


Figure 5. Probe float installation

Attaching Cable Connector to Probe Canister

Attach the connector end of the probe cable to the threaded connector on top of the probe canister and tighten down the integral nut.

This completes the probe assembly. Save the remaining kit components. They will be needed to install the probe into the tank. Reference the appropriate Site Prep and Installation Manual for your console.



For technical support, sales or
other assistance, please visit:
www.veeder.com

A blue square containing a white globe icon at the top and contact information for technical support, sales, and assistance below it.